

March '90

DEPARTMENT OF ROAD TRANSPORT

Mr. W. Gransden,
2J Grosvenor St.
CLANDORE SA 5037

Dear Sir,

Further to your letter of 12 February 1990, please find attached a summary of results from the tests carried out at our Gawler Site Laboratory. Insultec was applied in March 1989 and temperatures were monitored before and after painting to provide a comparison. (refer letter dated 2 May 1989).

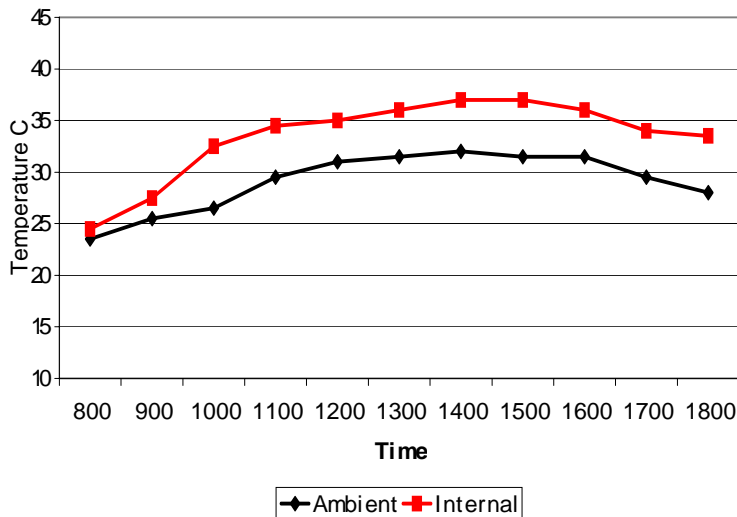
Although recording was carried out over a number of consecutive days, the figures shown in appendix 1 were selected on the basis of offering maximum temperatures of 44C : 37C: and 28C with an associated spread of results.



Yours faithfully,

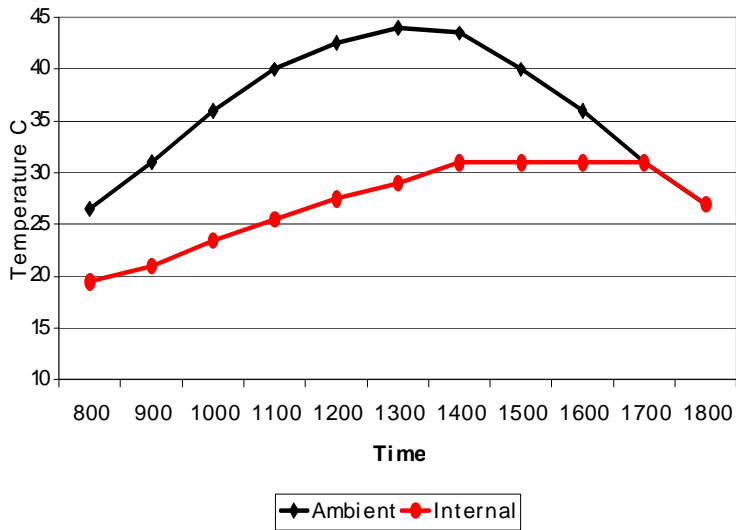
W. Steele
W. Steele
Manager Material Services

Before coating - Feb '89



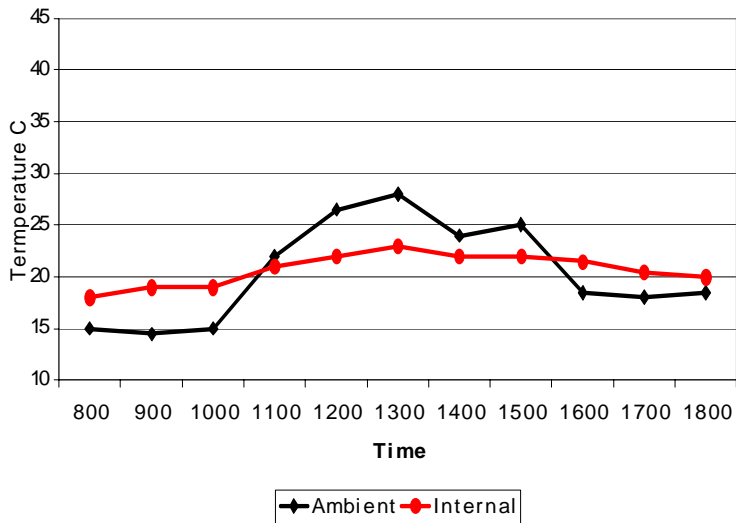
BEFORE INSULTEC
- INTERIOR HOTTER THAN EXTERIOR

After coating - 25 Jan '90



AFTER INSULTEC
- INTERIOR COOLER THAN EXTERIOR

After coating - 28 Jan '90



After coating - 29 Jan '90

